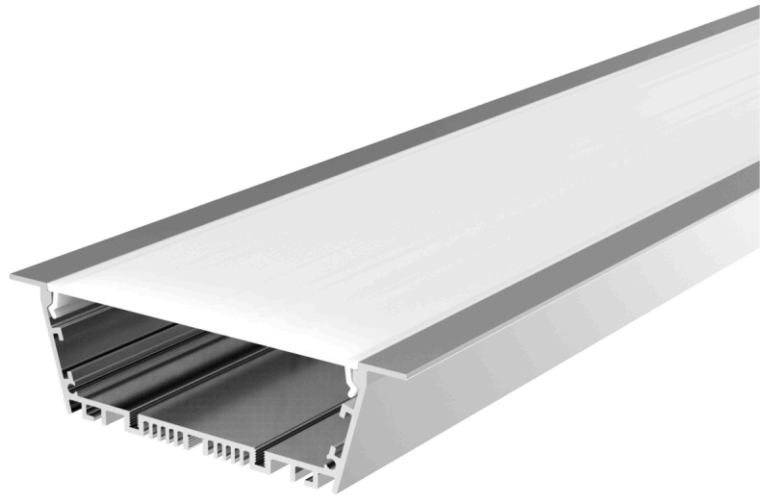


GIGER 562

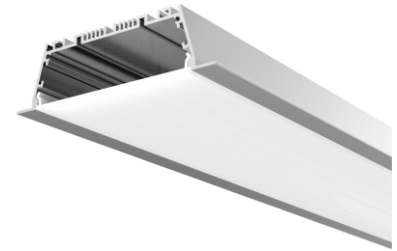
Extrusion Profile



Ultra wide and shallow profile

Giger 562 is designed for custom assembly into linear light fixtures at any length. The wide format allows inclusion of multiple LED modules which enables massive light output in a recessed luminaire. The shallow profile is perfectly suited for shallow ceiling voids and in ceiling obstructions.

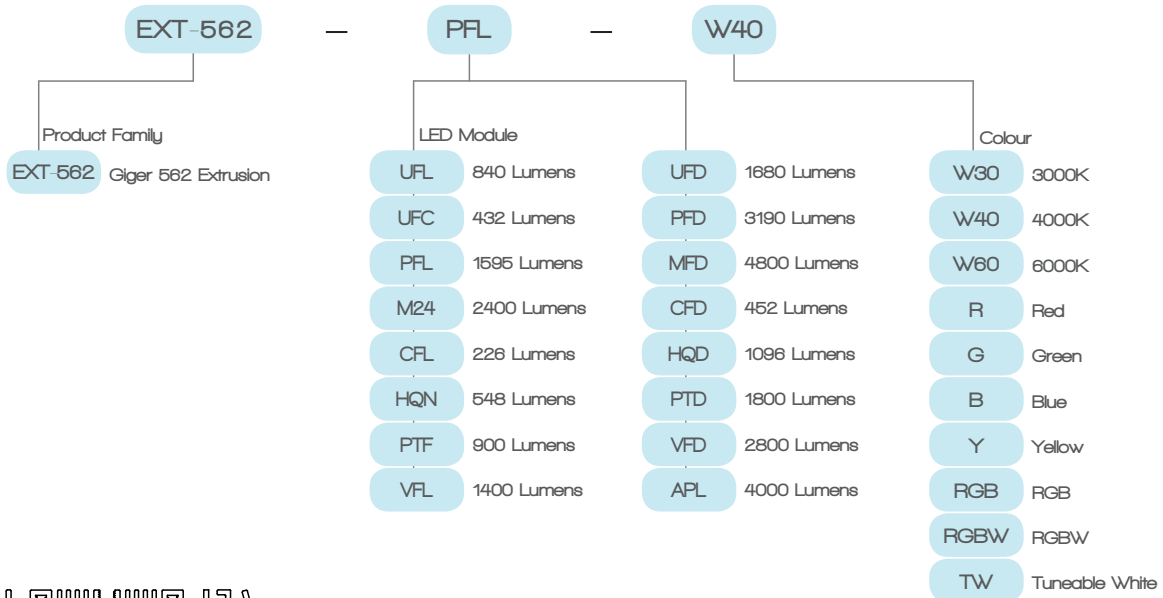
Assembled and supplied as multiple ready to install luminaires, Giger 562 provides a seamless linear lighting finish. Available with a range of strip options, Giger 562 is best suited to high output general lighting.



AVAILABLE WITH

Code	Colours	Watts p/m	Lumens p/m	Code	Colours	Watts p/m	Lumens p/m
UFL	3000K, 4000K, 6000K	8.64	840	UFD	3000K, 4000K, 6000K	17.3	1680
UFC	Red, Green, Blue, Yellow	8.64	432	PFD	3000K, 4000K	30	3190
PFL	3000K, 4000K	15	1595	MFD	3000K, 4000K	48	4800
M24	3000K, 4000K	24	2400	CFD	RGB	28.8	452
CFL	RGB	14.4	226	HQD	RGB	34.6	1096
HQN	RGB	17.3	548	PTD	RGBW	34.6	1800
PTF	RGBW	17.3	900	VFD	Tunable White	28.8	2800
VFL	Tunable White	14.4	1400	APL (in dev)	3000K, 4000K	40	4000

ORDERING CODES



DIMENSIONS

