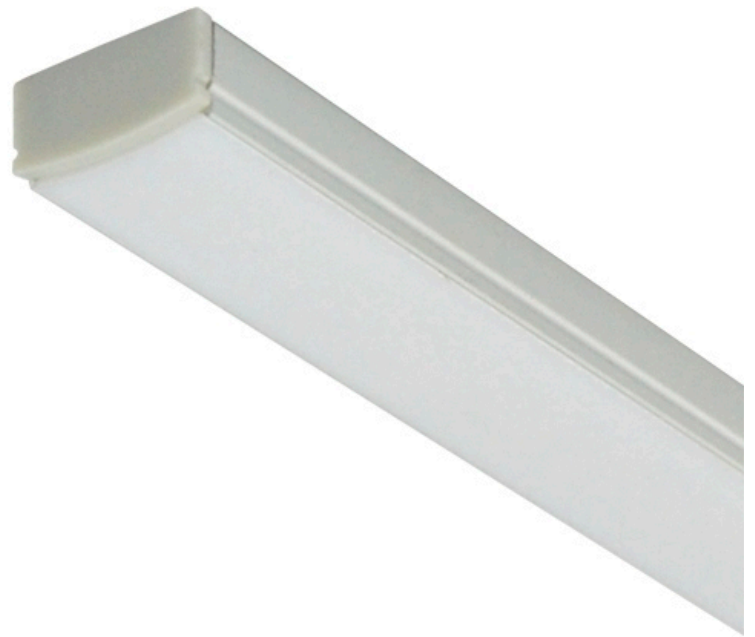




# SLIM 17

LED Extrusion Profile

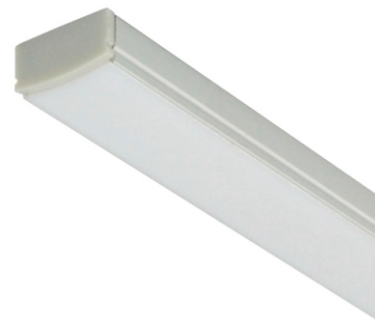


LED Lighting  
Fibre Optic Lighting  
Lighting Control  
Electronic Engineers



# SLIM 17

## LED Extrusion Profile



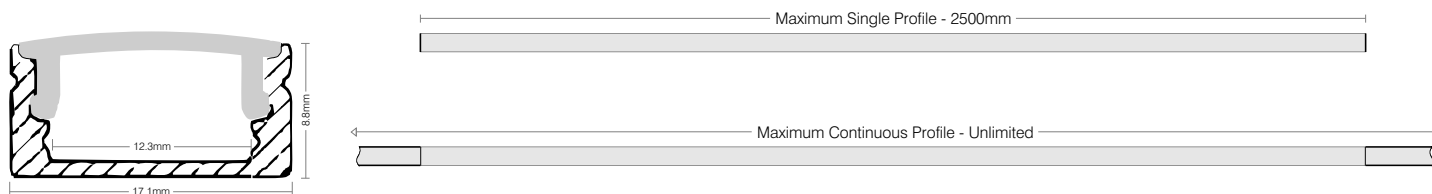
### A compact profile for surface mounted applications.

Slim 17 is a compact and shallow economical profile suitable for surface mounted applications. Available with clear, frosted and opal diffusers, Slim 17 is well suited to task lighting, decorative linear lighting and cabinetry.

Slim 17 can be combined with many of the available Digilin LED modules, providing an ultra versatile LED lighting system.

LED Options	Lumens (p/m)				Power (p/m)			Performance			
	2700K	3000K	4000K	5700K	W	VDC	mA	CRI (default)	CRI (option)	L70 (Calc)	L70 (TM21)
<b>White</b>											
LED 70	-	72	-	-	1.2	24	50	80	Nil	54,000	36,000
LED 800	780	800	870	910	7.92	24	330	80	90/95	54,000	36,000
LED 1600	1447	1480	1613	1680	16.08	24	670	80	90/95	54,000	36,000
LED 2400	2170	2220	2420	2520	24.00	24	1000	80	90/95	54,000	36,000
<b>Colourmixing</b>				All (inc white)	W	VDC	mA	CRI (default)	CRI (option)	L70 (Calc)	L70 (TM21)
RGB 300				480	11.52	24	480	-	-	54,000	36,000
RGBW 900				906	17.28	24	720	80	-	54,000	36,000
<b>Tunable White</b>	3000K	4000K	5000K	6000K	W	VDC	mA	CRI (default)	CRI (option)	L70 (Calc)	L70 (TM21)
VariWhite 1400	1506	1550	1594	1638	14.4	24	600	80	-	54,000	36,000

### Dimensions



### Ordering Codes

QUICK SPEC				OPTIONS			
Profile	Lumen Group	Colour/CCT	Cover/Lens	CRI	Shield	Finish Colour	Mounting
SLM017	0800	W30	O	-	-	-	-
SLM017 Slim 017	0070 70 Lumen 0800 800 Lumen 1600 1600 Lumen 2400 2400 Lumen 0300 300 Lumen (RGB) 0900 900 Lumen (RGBW) 1400 1400 Lumen (VariWhite)	W24 2400K W27 2700K W30 3000K W40 4000K W57 5700K RGB RGB RGBWxx RGBW WxxWxx VariWhite	O Opal F Frost C Clear	- Default 90 90+CRI 95 95+CRI	- Default (nil) S44 Shield 44 S55 Shield 55 S65 Shield 65	- Default (raw) WHT White BLK Black CST Custom Colour	- Default SFC Surface REC Recessed SUS Suspended ROD Rod Suspended

NOTE - Dot free illumination is guaranteed with all White LED/Opal diffuser combinations. Clear and frosted diffusers will not provide dot free finish. Tunable White, RGB or RGBW LED's may produce spotting on small profiles.



LED Lighting  
Fibre Optic Lighting  
Lighting Control  
Electronic Engineers



1800 950 888  
+617 3899 1267  
info@digilin.com.au  
www.digilin.com.au