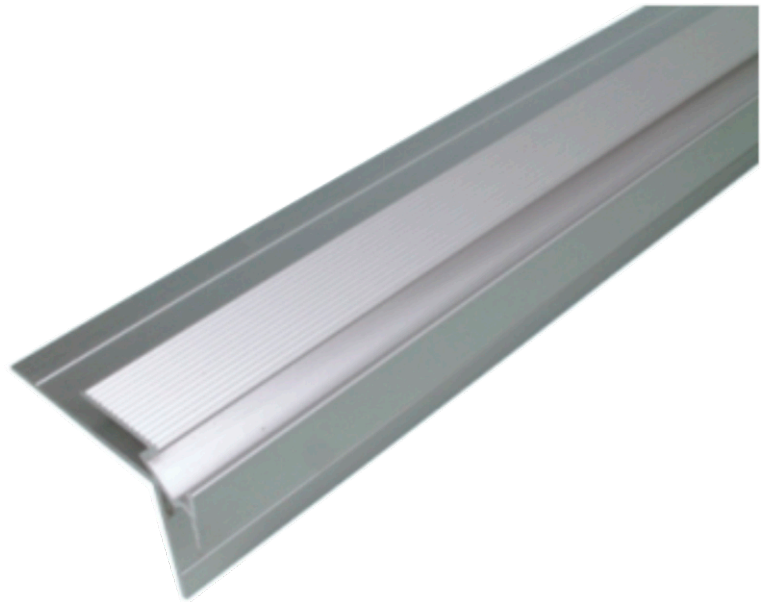




STEP 75

LED Extrusion Profile

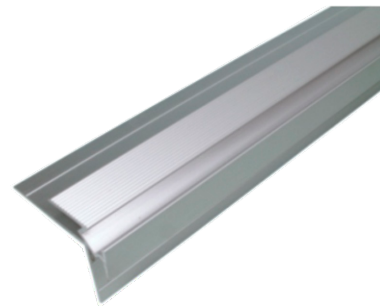


LED Lighting
Fibre Optic Lighting
Lighting Control
Electronic Engineers



STEP 75

LED Extrusion Profile



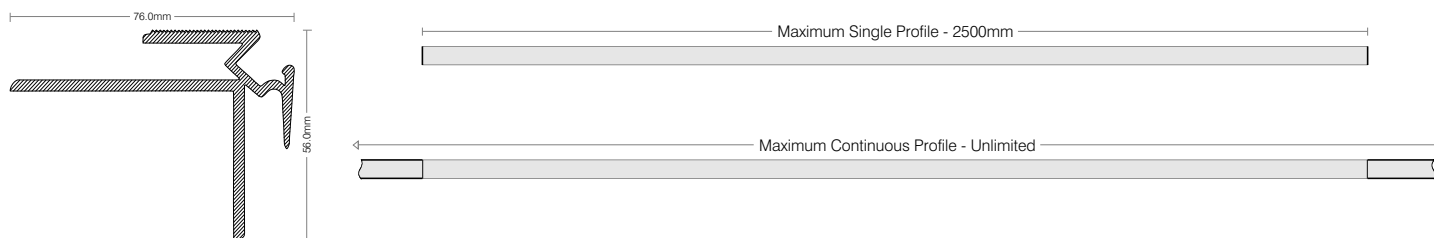
Stair tread profile for carpeted stairs

Step 75 is a durable lighting profile for illuminated stairway applications. This particular profile is extremely popular in theatre, cinema and auditorium projects where it provides clear indication of stairs and thresholds.

Step 75 is perfectly matched with LED 70 module for low light levels and a dot free finish.

LED Options	Lumens (p/m)				Power (p/m)			Performance			
	2700K	3000K	4000K	5700K	W	VDC	mA	CRI (default)	CRI (option)	L70 (Calc)	L70 (TM21)
White	2700K	3000K	4000K	5700K	W	VDC	mA	CRI (default)	CRI (option)	L70 (Calc)	L70 (TM21)
LED 70	-	72	-	-	1.2	24	50	80	Nil	54,000	36,000
LED 800	780	800	870	910	7.92	24	330	80	90/95	54,000	36,000

Dimensions



Ordering Codes

QUICK SPEC				OPTIONS		
STP075	0800	W30	O	-	-	-
Profile	Lumen Group	Colour/CCT	Cover/Lens	CRI	Shield	Finish Colour
STP075 Step 75	0070 70 Lumen 0800 800 Lumen	W24 2400K W27 2700K W30 3000K W40 4000K W57 5700K	O Opal C Clear B Blue R Red A Amber	- Default 90 90+ CRI 95 95+ CRI	- Default (nil) S44 Shield 44 S55 Shield 55 S65 Shield 65	- Default (raw) WHT White BLK Black CST Custom Colour

NOTE - Dot free illumination is guaranteed with all White LED/Opal diffuser combinations. Clear and frosted diffusers will not provide dot free finish. Tuneable White, RGB or RGBW LED's may produce spotting on small profiles.



LED Lighting
Fibre Optic Lighting
Lighting Control
Electronic Engineers



1800 950 888
+617 3899 1267
info@digilin.com.au
www.digilin.com.au