



CAUTION

- Installation should only be performed by a qualified professional.
- Install in accordance with all appropriate wiring standards.
- DALI is not SELV and needs to be wired accordingly.
- Never connect a LED luminaire to a driver that is powered. Doing so may result in damage to the LED.
- Always make sure the output voltage range and output current of the LED driver match the requirements of the LED luminaire. Failure to do so may result in damage to both the driver and the luminaire.
- The light source contained in this luminaire shall only be replaced by the manufacturer, specified service agent or a similar qualified person.
- Do not install under mechanical stress.
- Allow for expansion due to changes in temperature.
- Please be aware that while the system has a very long operational life, faults may occur, and provision needs to be made for maintenance.
- All cabling connections should be sealed and protected.
- Always turn off power before working on luminaire.

Overview

Surface Mount, 500mm

| | |
|------------|--------------|
| Dimensions | 44mm* x 75mm |
| Length | 520mm |
| Weight | 950g |

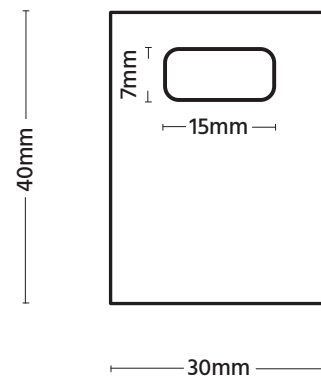
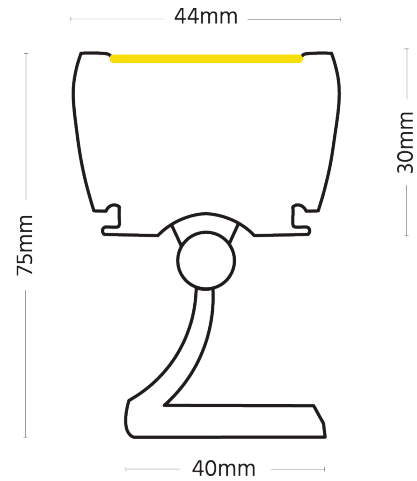
* Profile not including brackets



Surface Mount, 1000mm

| | |
|------------|--------------|
| Dimensions | 44mm* x 75mm |
| Length | 1020mm |
| Weight | 1.7kg |

* Profile not including brackets



Mounting Bracket Base

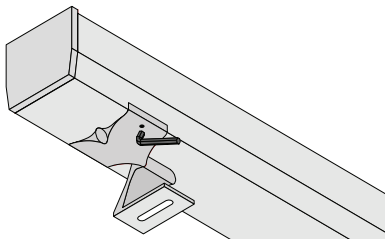
Installation

Wiring Diagram - Remote

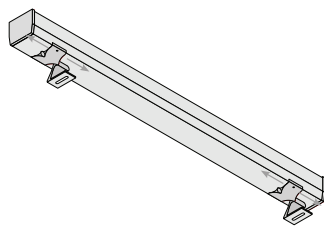


Note: Drivers should not be covered. Drivers rely on convection air flow for cooling and covering them may cause them to enter thermal regulation.

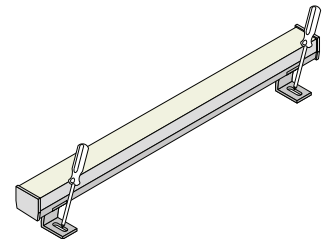
Installation Process



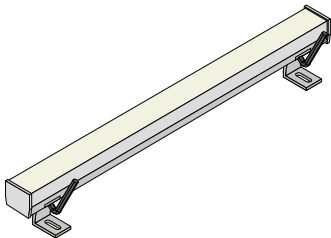
1. Loosen the grub screw holding the two mounting brackets in place.



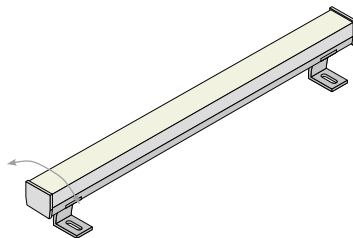
2. Slide the mounting brackets into the desired location.



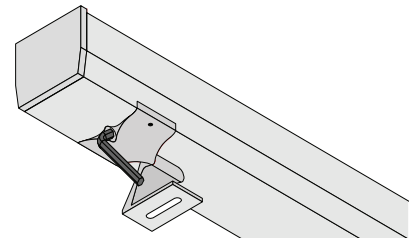
3. Secure the fitting to the mounting surface using suitable fasteners.



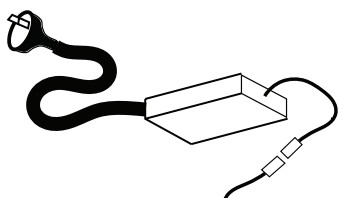
4. Lock the mounting brackets into place by tightening the grub screws.



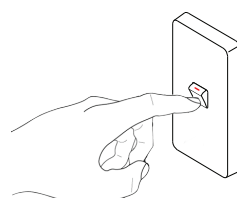
5. Adjust the fitting angle as required.



6. Lock the fitting angle by tightening the screw on the mounting bracket.



7. Connect power using a suitable waterproof method.



8. Connect to power.

For technical information or support, call us on +617 3899 1267 or refer to www.digilin.com.au.